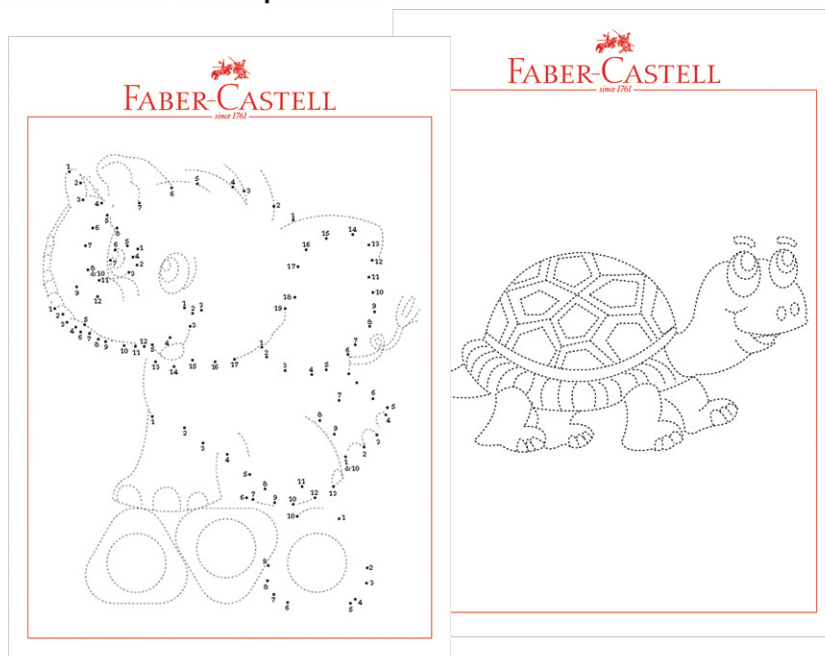


Join The Dots and Colour! with Faber-Castell



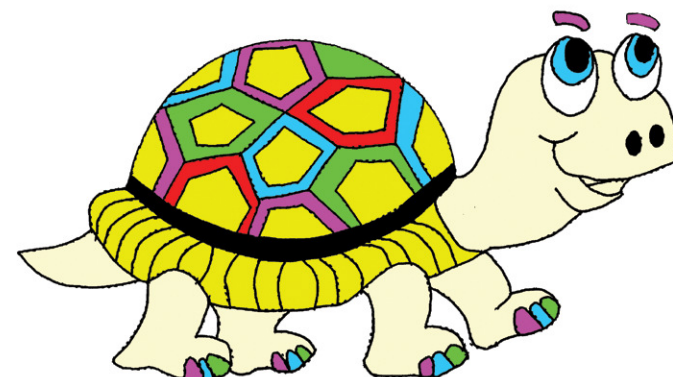
STEP 1:

Print the templates provided and join the dots - following the number order where provided.



STEP 2:

Colour in the drawing and decorate using your own personal style!



Creative Tips!



Using Lines to Colour

Using Connector Colour Pens, you can colour in your drawings with parallel lines to get a different look. By placing the lines closer to each other you can add intensity and shadow to your drawings.



Curves

To draw curved objects just colour your drawing using bent lines.



Creating New Colours

You can create new colour with dots by drawing dots of different sizes, densities and colours. This can give the appearance of a single colour when viewed from distance.



Lighting and Shading

You can get shadows as well as a dimensional effect by using different shades of the same colour on different parts of the drawing. The closer the lines are together, the darker the shade. The further the lines are away, the lighter the shade.



Shining and Lighting effects

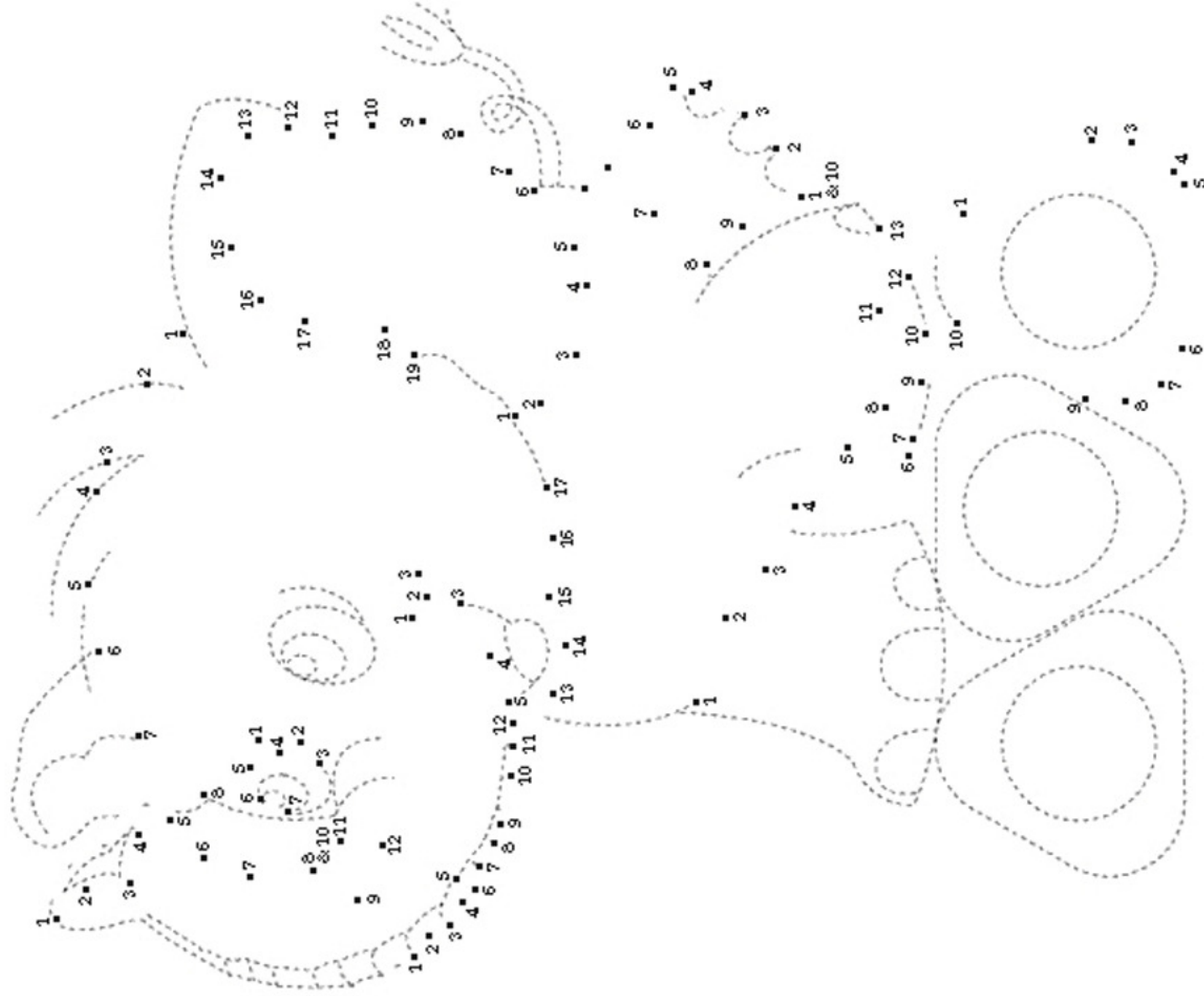
You can also colour your drawings with dots. By changing the space in between dots, you can get shining and lighting effects. The best product to colour using dots are Faber-Castell Poster Art Pens, because they have bigger tips.





FABER-CASTELL

since 1761





FABER-CASTELL

since 1761

