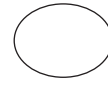
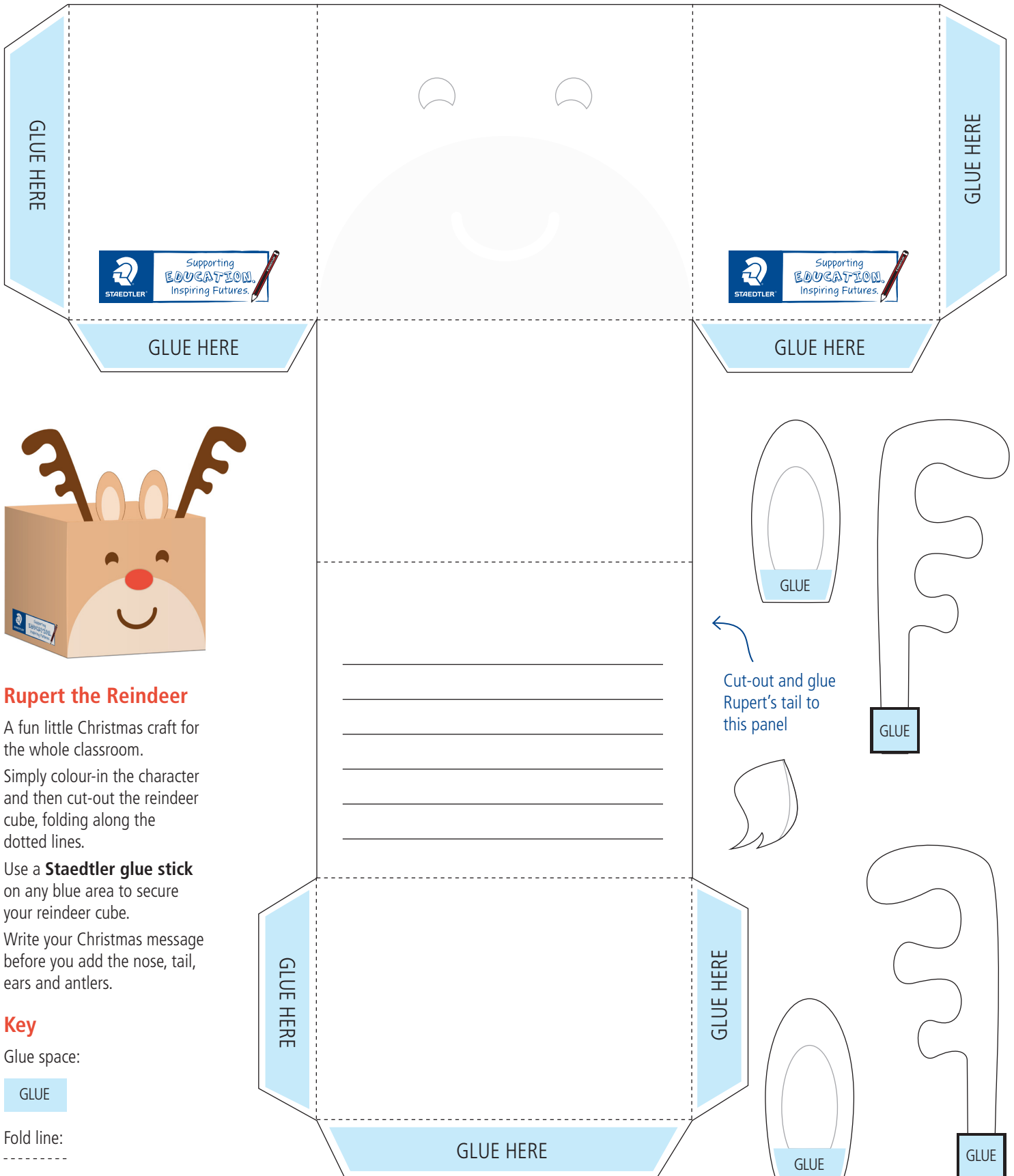


Rupert the Reindeer



Cut-out and glue Rupert's nose to this panel



Rupert the Reindeer

A fun little Christmas craft for the whole classroom.

Simply colour-in the character and then cut-out the reindeer cube, folding along the dotted lines.

Use a **Staedtler glue stick** on any blue area to secure your reindeer cube.

Write your Christmas message before you add the nose, tail, ears and antlers.

Key

Glue space:

GLUE

Fold line:

