

# Dog's Head

Rated: Easy



## YOU WILL NEED

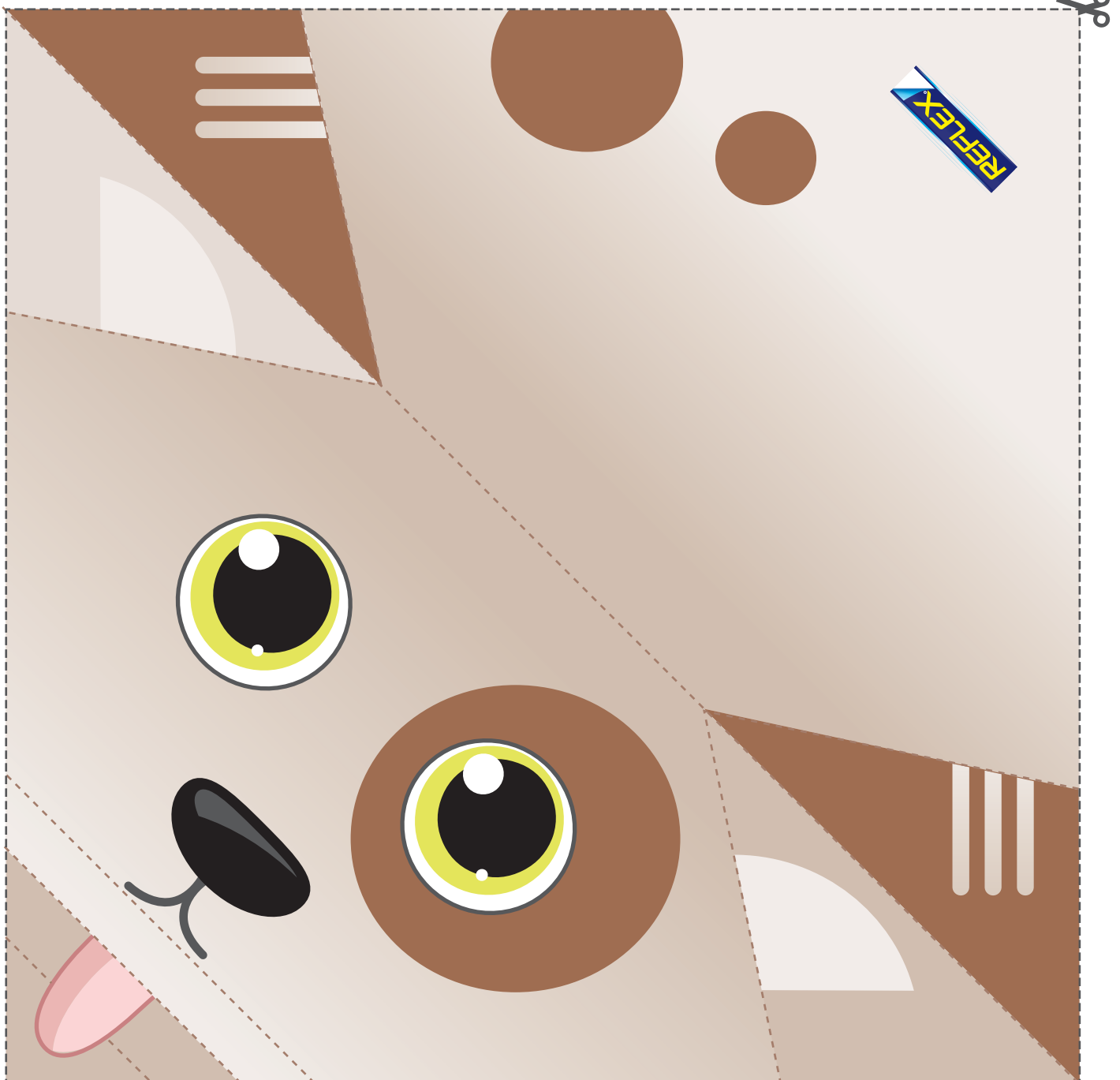
- ✓ Scissors
- ✓ 2 sheets of A4 Reflex paper

## KIDS

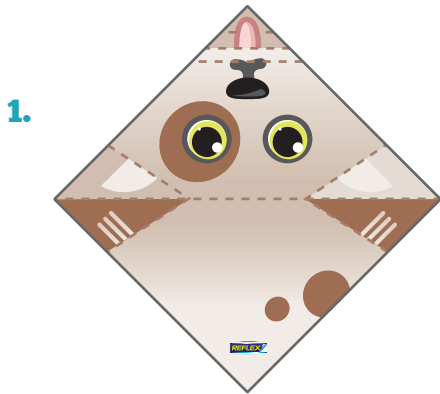
- ✓ Get an adult to help you cut out the template and make your dog's head

## GETTING STARTED

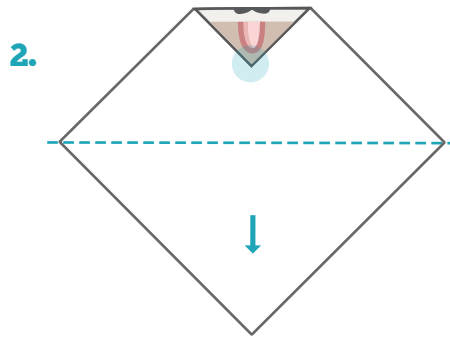
1. Print this template
2. Carefully cut out the template below (black dashed lines)
3. Then carefully follow the instructions on the next page to make your dog



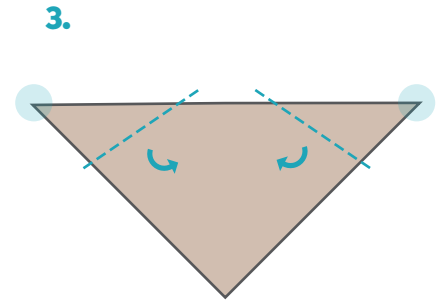
For better performance, always rely on Reflex.



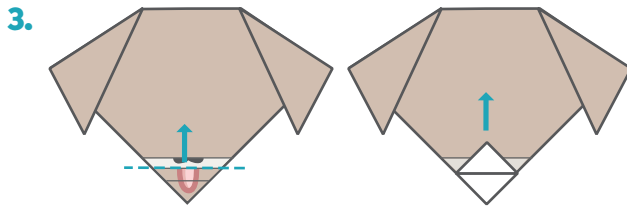
Start with the template face up as above, then turn over to show the blank side.



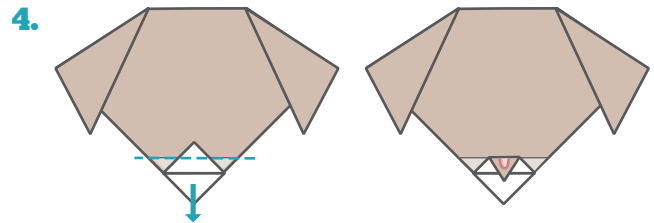
Fold the top corner down to the bottom corner.



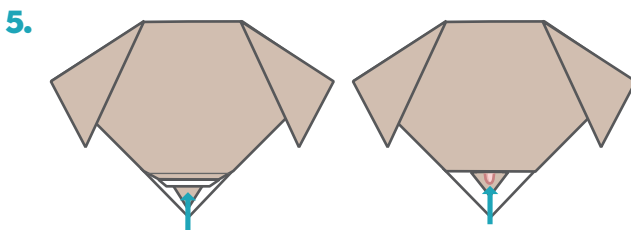
Fold the two top corners down, using the dashed lines on the template as a guide.



Fold the top layer of the bottom up, fold on the middle dashed line, then crease.



Fold down the top point.



Tuck the fold under the inside of the head to create a mouth.

## 6. FINISHED



You can use your dogs head as a puppet by inserting your hand inside the head.